

HOMES & INTERIORS SCOTLAND

FREE
ART GUIDE



YOUR DREAM **BATHROOM** STARTS HERE

ALL ANGLES

Swan-neck light in Carbon, £60, Garden Trading. **2** London Funkave tile, £45 per sq m, Baked Tile company. **3** Wapping Orange metro tiles, £19.95 per sq m, Walls and Floors

3



LOOKBOOK

ALONG THE LINES

Bright shades, bold shapes and broad stripes – these may not be the obvious starting points, but there are real benefits to thinking outside the box when it comes to changing this space. Balance, of course, is key: pinks, greens and blues work in harmony in the above bathroom project by Drummonds, so the air of tranquillity is undisturbed. The statement floor is strong but doesn't overpower, thanks to the high ceiling and the neutral touches in the rest of the decor. Similarly, the thick stripes of the floor on the left are softened by the choice of paint colours, both from the Benjamin Moore range – Sapphireberry (the blue wall) and Trout Gray (behind the sink). Experiment in an en-suite if you have one, then perfect it for your main bathroom.



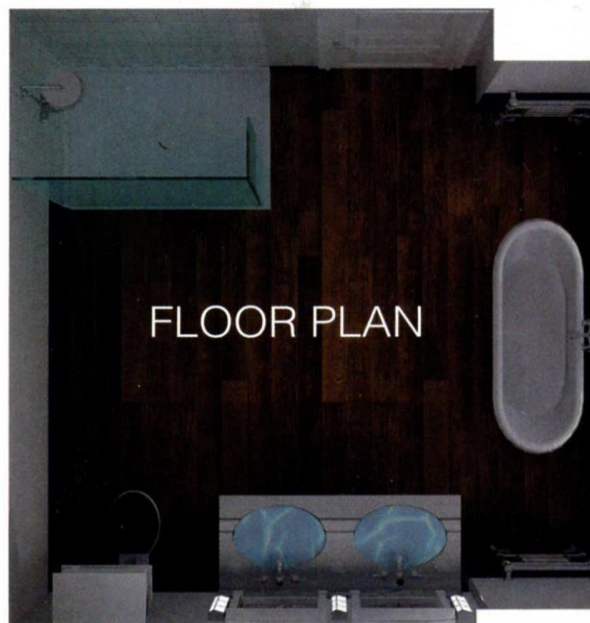
BRIEF To create a traditionally styled bathroom in a spacious room, featuring a bath, separate shower and a toilet with a high-level cistern.

WORKS REQUIRED The bathroom was to be created in a room that was being used as a bedroom, so all plumbing etc had to be created from scratch. The old bedroom had an en-suite, so access to water and drainage was already possible.

BIGGEST CHALLENGE Ensuring the fixtures were substantial enough not to be dwarfed by the room's proportions.

BUDGET Similar bathroom fixtures would cost around £18,000.

DESIGNER Lee Collins of Braco Designs in Dunblane, bracodesigns.co.uk, using bathroom pieces by Drummonds, drummonds-uk.com



KEY FIXTURES

- Tay bath, from £3,570
- Bath and shower mixer with H stand in chrome, from £2,448
- Crake double-basin vanity in marble and chrome, £8,940
- Brora WC suite in chrome, from £2,904
- Chessleton shower: controls, trims, rose etc, from £3,420

FLOORING

- The flooring is Hatters oak, supplied by Broadleaf Timber. "We wanted to inject warmth into the design and also add character that would age well," says Lee Collins. "Broadleaf Timber helped us source the best wood for a bathroom environment, taking into account moisture and water spillage."

FINISHES

- The panelling is painted in Zoffany's Reign Blue acrylic eggshell, £51 for 2.5 litres
- The walls are painted in Little Greene's Slaked Lime intelligent matt emulsion, £45 for 2.5 litres

The classic white and chrome theme is extended to the shower and bath, with everything set off beautifully by the dark-blue panelling



CASE STUDY

CLASSIC GOOD LOOKS

Photography Darren Chung Words Teddy Macduff

Special homes deserve special bathrooms, and this exceptional house finally has a bathroom worthy of it. Part of the landmark estate designed by the visionary Victorian builder Alfred Heaver, whose red-brick terraces have been a sought-after address for more than a century, the house overlooks a leafy stretch of parkland. And it was this view that particularly impressed Lee Collins of Braco Designs when the owners asked him to come up with ideas for a new bathroom.

Boasting seven bedrooms, the house had plenty of space, but not all of it was being used as well as it might have been. This room, for example, was a guest bedroom – but it had the best views across the common. “The owners felt it was a shame that they

didn’t get to enjoy this amazing panorama on a daily basis,” says Collins, “so they decided to turn this room into the master suite’s bathroom, taking the remaining front bedroom as their own room.”

With a floor area measuring almost 4m by 4m, there was plenty of space for Collins to meet the brief: a freestanding bath, separate shower and high-level cistern, all with a traditional look. “The clients and I worked very closely on layout and product choice,” he says. “I sounded them out on their likes and dislikes and spent a lot of time coming up with the best layout and products to fulfil the brief. In the end, I proposed using Drummonds’ sanitaryware as I knew it would give them the look they wanted – and the build quality is excellent.”

Collins began with the windows: "They are such a beautiful architectural detail," he says. "When I first saw the room, I just loved the windows – I knew this would be the perfect position for the bath."

Drummonds' cast-iron Tay bath was chosen, complemented by freestanding taps. It's a double-ended roll-top with a skirt, which gives it a classic look, and placing it in front of the windows makes the most of the symmetry of the room. A large open shower was built in the opposite corner, all the elements coming from Drummonds' Chessleton range in chrome. Its minimal frame keeps it feeling light and airy, with subway tiles serving to delineate this area.

To balance the shower, Collins went for a double-basin vanity unit. Its distinctive chunky stand, chrome legs and marble top keeps the look cohesive. "The scale works perfectly with the proportions and architectural detailing of the room," notes the designer.

Warm timber flooring and striking blue paint complement the white and chrome scheme. "Right from the start, the clients had set their hearts on dark blue for the walls," says Collins. "It proved to be a great choice as it makes the bath and marble sink really stand out."

Indeed, with sunlight filtering through the trees opposite and filling the room with a beautiful golden glow, the colours really sing. The designer admits he enjoyed the project: "The clients were a joy to work with," he says. "As a result, we produced a lovely practical space that will still look great in ten years' time." ■

THE DESIGNER'S NOTEBOOK

Lee Collins discusses some of the background to his Drummonds bathroom design

- The entire house was refurbished over a period of nine months, making it into a modern, functional home that still respects the building's history and design. It has seven bedrooms (four in use as bedrooms, one as an office, one as a gym, and one as a den/lounge for the family's two children).
- Found on the first floor at the front of the house, the bathroom is part of the master suite – a bedroom, bathroom and dressing room. It is highly functional but also very beautiful.
- The bathroom project was really straightforward and went very smoothly – besides rejigging doorways, the construction work was fairly low-level.
- The bathroom lighting utilises a combination of modern LED spotlights which are functional (being split into two zones) and economical to run, as well as a more traditional-looking chandelier. Obviously, any lighting in a bathroom needs to have the right rating. What we have chosen here softens the look of the room, while at the same time highlighting and making use of the original ceiling rose feature.

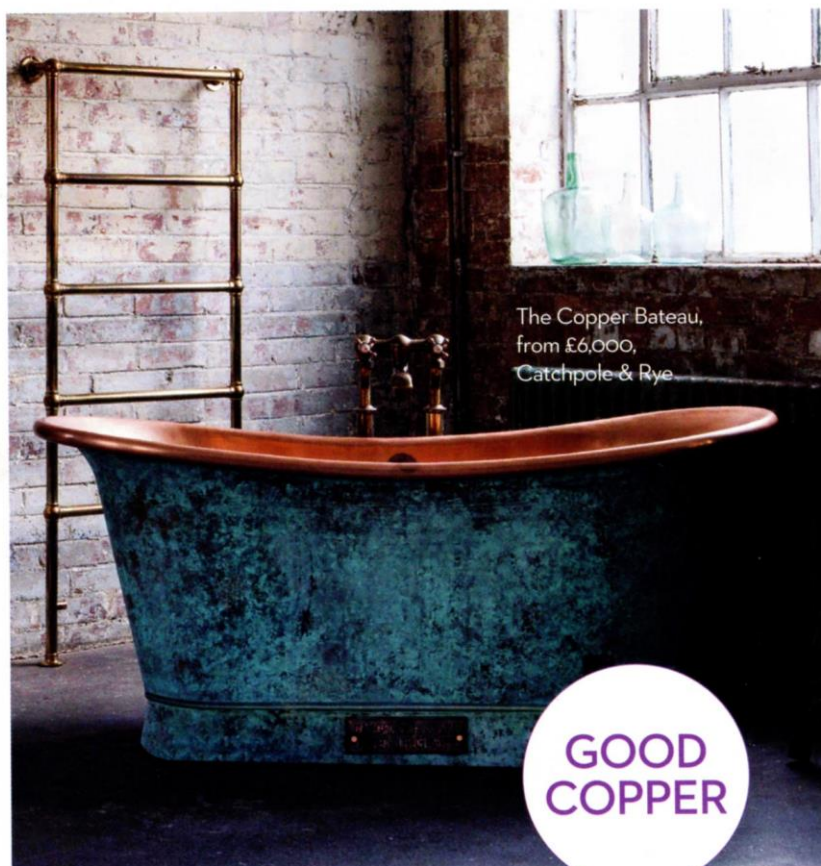


A slab of Arabescato marble tops the vanity unit.

TOP TIPS

Phil Etherden of the Albion Bath Co offers up bath advice

- It's important to consider whether you are wanting a traditional or contemporary look; bath tubs in particular are available in many styles including roll-top or flat top, single or double ended, and have many possible feet or plinth options. There is also the option to have a freestanding bath that is designed to tile into a wall or even to use as a shower bath.
- It is crucial to decide what size of bath you want and need. We often talk to customers who are trying to shoehorn a big bath into a small space – don't make this mistake. Select one that's right for your room and right for your body size.
- Don't forget about taps. The option you choose is governed by the location and style of the bath. Choose taps that are durable and will work with any domestic water system. In the case of tap quality, you get what you pay for – so buy the best that you can.



If you want a more unusual material, such as copper, it is worth thinking about the upkeep and consulting the seller when it comes to the maintenance. Cathpole & Rye's copper products have a "unique clear lacquer applied to the topcoat to ensure that the finish is protected and stays looking new," says Rita Rendo-Castro. "This means that no maintenance, such as polishing or buffing, is required to keep the product looking just like the day you received it." However, that doesn't mean that you're off the hook completely. "We do, however, recommend that copper products are dried with a soft cloth or towel to help keep them in pristine condition," says Rendo-Castro.



Copper Tyne Bath with a copper exterior & nickel interior, £5940, Drummonds

COOL COLLAB

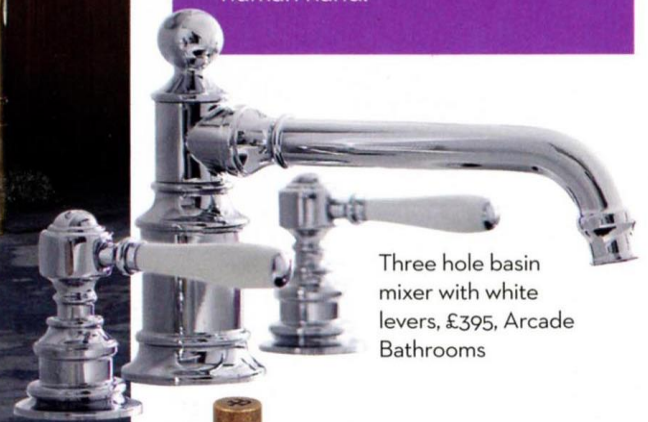
Taps are also getting the designer edge, with collaborations such as the cool Leawood tap and shower collection (left), which was designed by Martin Brudnizki for Drummonds. Function as well as aesthetics has been carefully considered; the flat end on the lever controls was designed after observation of how tools fit comfortably in the human hand.

ON TAP

SPEND A LITTLE MORE TO GET THE ONE YOU WANT

It is perhaps the most versatile item in the bathroom: you can have it standing out or standing tall, attached to the wall or perched on top of the sink. Taps are gaining in popularity in their own right as stand-out items; for example, there is something striking about a stark white bathroom contrasted with modern black taps, or indeed a contemporary luxury bathroom that pairs bright patterned tiles and a brushed gold basin mixer. The industrial look is also popular, with almost machine-like designs with materials such as concrete worked in.

The type of tap chosen is usually dictated by the style of sink or bath you have, but often now a bathroom scheme begins with a tap and the rest of the room then works around it. If you want to switch up the style of the bathroom but can't afford to change the white goods, then updating the taps could be the solution. That's not to say it will be a totally cheap option; taps have to work really ►



Three hole basin mixer with white levers, £395, Arcade Bathrooms



Ten Ten Three Hole Basin Mixer with handwheels, £886, Lefroy Brooks

METAL HEADS



Acme wall mounted basin mixer, £336, Aston Matthews



C243 in Wall Three Hole Basin Mixer, from £490, Chadder & Co

Mayfair shower
tray, £5,400,
Catchpole & Rye

HOLD ON

- 1 Classic wall-mounted soap dish, £206, Decor Walther
2 Matt-black soap holder, around £29, Meir Australia
3 Timeless soap dish and holder, £22, Cooke & Lewis



Options cylinder showerhead,
from £380, Bagnodesign

SET THE TONE

LET IT RAIN

THIS SEASON'S CONTEMPORARY SHOWERS

Choosing a new shower isn't always that simple. Best advice, says James Lentaigne of Drummonds, is to go right back to basics, at which point you'll see there are actually just three types of shower to choose from: freestanding, concealed and surface-mounted. To determine the best option for your bathroom, look to the layout, he suggests. "Does the floorplan of the room dictate the type of shower you must go for or do you have the freedom to position it anywhere?" he asks. "If it can go ►

Grandera in Warm Sunset,
from £400, Grohe

A FAMILY AFFAIR

Dan Cook of CP Hart talks us through making a shower safe for all ages

- A wet room: not only is it a great look, but advances in the products used and the installation methods mean that it's not as complicated to achieve as you'd think. Barrier-free entry is not only useful for wheelchair-users (assuming you have the correct turning circles and spaces) but for anyone who is a little unsteady on their feet or even for active children running around.
- Flooring: underfloor heating will speed up the drying of your floor surface, which in turn will reduce the risk of slipping when you get out of the shower. Textured tiles (which are more slip-resistant) will also help. Be careful they're not too rough, though - not only do they create places for dirt and limescale to develop, making it harder to clean, they can also be less forgiving if you take a tumble on them.
- Walls: it pays to think about your wall structures. If at a later date you want to install some grab bars or a wall-mounted seat, these will only be as strong as the structure they are fixed to.



Zion hinged door, from £719, Simpsons at Crosswater



Rettangolo Wall Mounted Thermostatic Mixer with Shower Head, from £1,441.70, Gessi

Aio Shower System, £635, Methven

STAND TALL

Vibe freestanding bath shower mixer, £815, Frontline Bathrooms

anywhere, and space allows, you could opt for the luxury of a freestanding shower.” Luxury equals high prices, though, doesn’t it? Initially, yes, Lentaigne agrees, but he points out you will remove costs such as tiling and tanking.

With a surface-mounted or concealed shower, he continues, the choice is down to personal preference. The former can offer a stunning centrepiece for a bathroom, while the latter will allow for a more minimal look. Think of the practicalities too. “We would always recommend a hand shower in addition to an overhead shower as it gives the option to shower without wetting your hair, it’s great for showering children and it also makes cleaning simpler.”

Modern updates are also an important consideration, points out Crosswater’s Marten Baker: “There are a few key areas where technology can help to streamline the shower experience,” he says. These include safety (thermostatic showers can ensure a regulated temperature), water output, digital (you can now personalise your shower by controlling flow as well as temperature), and pressure, which can also contribute to water saving.

Now you just have to decide on colour and finish...

BATHROOM NEWS

Solutions for your sanctuary



Little gem

The Bourne is the smallest basin that Drummonds offers, and is aimed at those who want high-end pieces but have minimal space. It's pictured here wall-mounted (with a hidden brass bracket), but it would also work with a vanity surface or cabinet.

From £864. drummonds-uk.com

This luxurious freestanding basin is part of Maison Valentina's Koi collection, which was inspired by the Koi fish, a prominent symbol in Japanese art and culture. The washbasin's golden stand represents the fish's scales and has been designed to shine and reflect light just as the koi would under the water.

£8,750. maisonvalentina.net

Off the scale



Catchpole & Rye has launched a scaled-down version of its copper Bateau bath. Designed and hand-finished in the company's Kent workshop, the bath is 1500mm long, rather than the standard 1700mm, but has lost none of its coveted look and shape. From £5,000. catchpoleandrye.com



Sleek Scandinavian pieces from Stockholm's Miller Bathrooms are now available at the North Berwick Bathroom and Tile Company in East Lothian. The simple Classic mirror, shown here, caught our eye.

£99. northberwickbathrooms.com

Head north



MOODBOARD

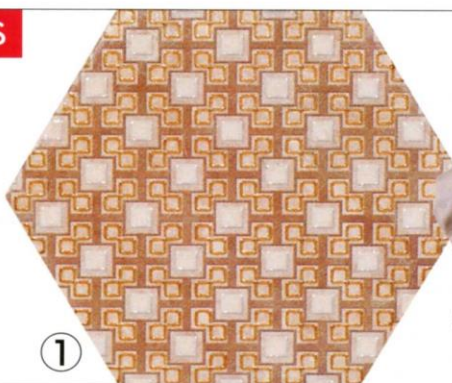
PAIR OLD PIECES WITH CONTEMPORARY DESIGN TO CREATE AN ELEGANT CITY PAD



TRADITIONAL FINDS



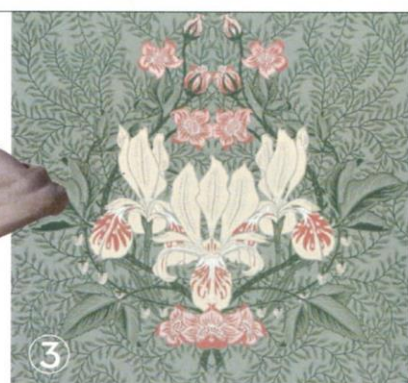
1 Emotion Hexagon Tiles, £69.95 per pack of 7, Walls and Floors
2 Diana Bust, £125, The French Bedroom Co
3 Siri Green, around £100 per roll, Sandberg



1



2



3

CHIC EXTRAS



1

2

3



4



1 Tonquin Rug in Blue, £349, Wedgwood
2 Rolandine Large Bronze 6 Light Chandelier, £920, The Chandelier & Mirror Company
3 Haresfield large sofa in Designers Guild Varese Platinum Silver Grey Velvet, from £1,660, Sofas & Stuff
4 "The Garden" Gold Leaf Coffee Table, £523, Alexander & Pearl

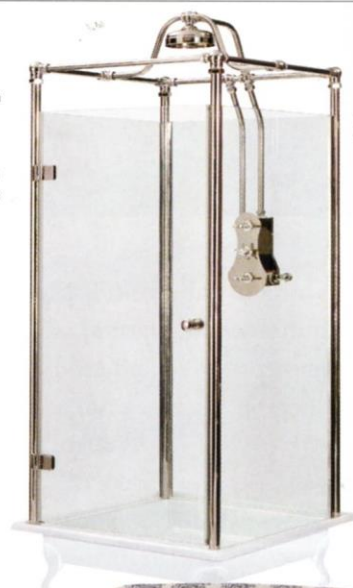
LUXURY ITEMS



1 Freestanding Spittal shower, from £20,340, Drummonds
2 Castaway Diamond Print Armchair, £949, Artisan
3 Chest of Drawers, £995, Shimu
4 Doric Glass Candlestick in Medium, £70, Sweetpea & Willow
Stockists on page 248



4



1



3



2