



DRUMMONDS
LONDON · ENGLAND



It has been an exciting year for Drummonds expanding our factories, opening in New York and new product collaborations.

We continue, however, to remain grounded in our roots to produce authentic products of the highest quality which is what I set out to do when I founded Drummonds in 1988.

Back then I saw the decline of craftsmanship in manufacturing with skills becoming lost to the world and processes changed by mass production.

Today our foundries work with iron, brass and clay, predominantly by hand, to produce a classic range unequalled anywhere else in the world.

DRUMMOND SHAW
FOUNDER

04 – 27

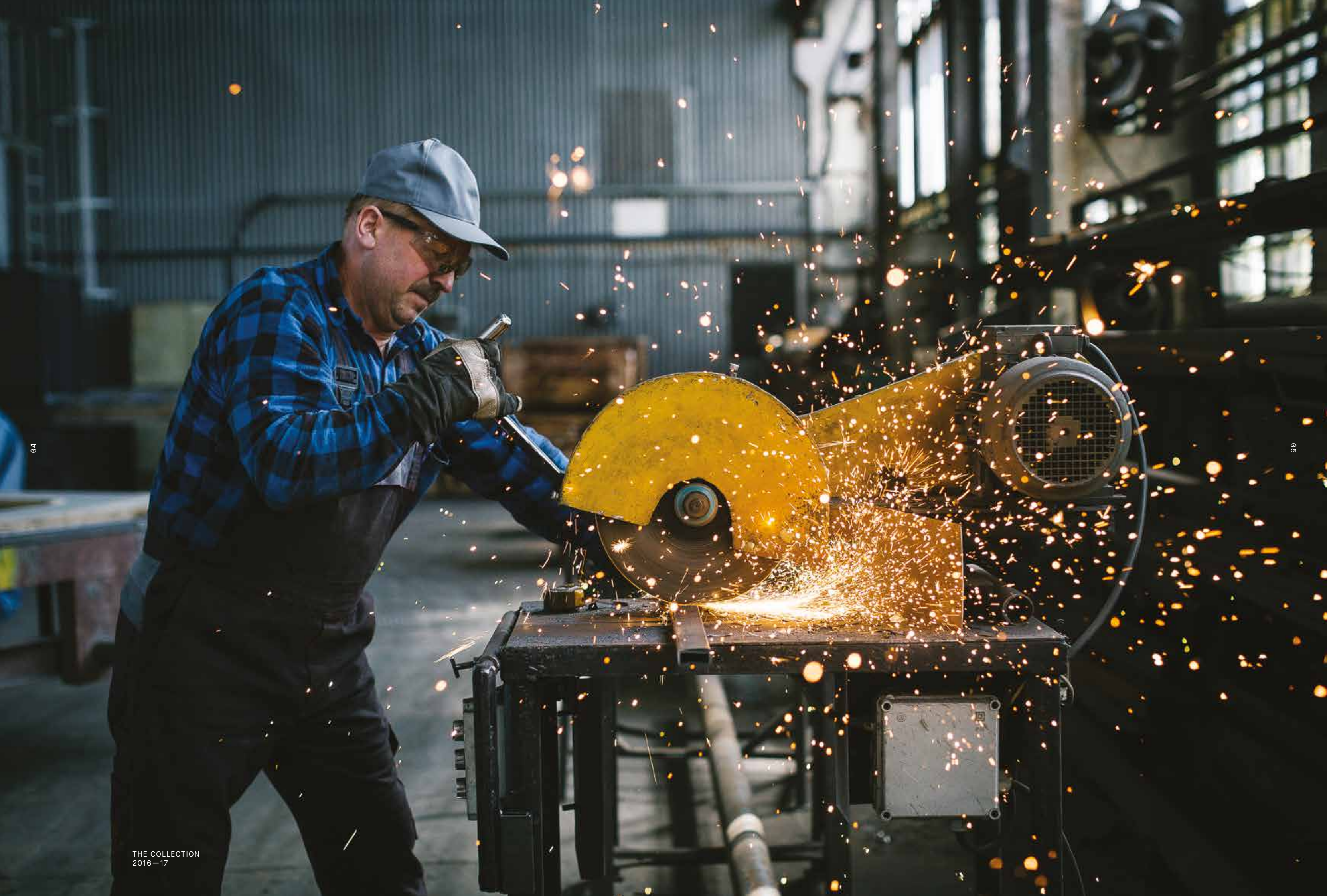
N01 **Manufacturing** **Iron/Clay/Brass**

28 – 35

N02 **Design**

36 – 109

N03 **Gallery**



The roots of Drummonds are deep in craft and design heritage, reaching far beyond our 28 years as makers of bathrooms. Inspired by the Victorian foundries of generations past, Drummond Shaw founded Drummonds not simply to create classic and beautiful bathroom pieces, but to rediscover the lost art of making them.

No1 Manufacturing

Each one of Drummonds' bathroom products is manufactured by us in our own factories using time-honoured, handmade processes.

Today we are proud to design and make all of our own classic pieces. Each design is steeped in history, but with a quality that ensures a future legacy.



SHOT BLASTING IN
ISOLATION.

MANUFACTURING.

Each design is steeped in history, but with a quality that ensures a future legacy. At Drummonds we look to the past to design for the future, we believe the antiques of tomorrow are being made by us today.

PREPARATION FOR ENAMELLING.



Iron

Each Drummonds' bath is crafted from hand-poured cast iron, using the time-honoured sandcasting technique first used in the finest Victorian foundries.



HAND FITTING THE BATH FEET ENSURES A PERFECT FIT.





EACH BATH IS HEATED TO 960°C
SEVERAL TIMES DURING THE
ENAMELING PROCESS.

Enamelling and hand-finishing each bath is a process where attention to detail is key. Our unique powdered enamel is sprinkled by hand up to five layers thick, resulting in the beautiful, undulating finish that forms the interior of our baths.



Clay



All Drummonds' ceramics, large and small are crafted using the finest quality English China Clay. Each piece is finished and glazed by hand, giving its own individual character.



HAND SPRAYING THE GLAZE PRIOR TO FIRING.



TEMPLATING EACH DESIGN TO ENSURE
THE CUT IS PERFECT.



Brass

24

25

Lost wax casting, a fine art rediscovered. Each and every piece of Drummonds' brassware, from a tap head to a towel rail, is hand carved in wax prior to casting. This traditional method allows extremely fine detail to be reproduced exactly as intended.



A COCOON IS BUILT UP TO COAT THE WAX MODEL.



THE ART OF POLISHING LIES WITHIN THE SKILL OF THE POLISHER.



QUALITY STARTS IN THE FINE DETAIL OF THE WAX MODEL.

FINAL CHECKING PRIOR
TO ASSEMBLY.

28

29

No2 Design

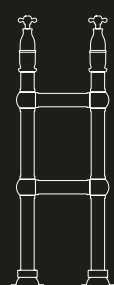


(← Left)

THE SHAPE OF OUR USK ROLL TOP BATH IS BASED ON A CLASSIC 18TH CENTURY DESIGN, KNOWN POPULARLY AS A BATEAU BATH OR 'BOAT BATH'.

AUTHENTIC DESIGN.

Discover for yourself our time-honoured, hand-crafted manufacturing methods, as we share with you not only our products but our design heritage which extends well beyond our 28 years as manufacturers. From our free-standing cast iron baths to our English chinaware and lost-wax cast brassware, we are proud to design and make classic products that stand the test of time.



(↑ Above)

LARGE AND BEAUTIFULLY FORMED, THESE CLASSIC BATH TAPS ARE A STUNNING ADDITION TO ANY BATHROOM.

THE COLLECTION
2016—17

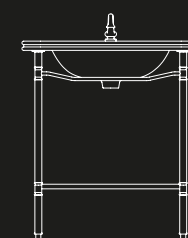


(↑ Above)

NAMED WHILST FLY-FISHING IN THE FAMOUS SCOTTISH RIVER, THE SPEY IS OUR LARGEST, LONGEST AND MOST LUXURIOUS FREESTANDING CAST IRON BATH.

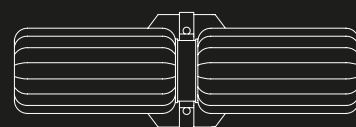
DESIGN

2016 marked our first collection launch with world renowned interior designer Martin Brudnizki and his product design studio, And Objects, heralding the beginning of an exciting product collaboration between the prestigious designer and our Drummonds brand.



(↓ Below)

ELEGANT, LIGHT AND MODERN, AND WITH CLASSIC WHITE MARBLE THE LADYBOWER IS ANOTHER PRODUCT FROM THE COLLABORATION WITH INTERIOR ARCHITECT AND PRODUCT DESIGNER MARTIN BRUDNIZKI.



(↑ Above)

PART OF THE 'MARTIN BRUDNIZKI FOR DRUMMONDS' COLLECTION, THE DERWENT LIGHT CHANNELS BRUDNIZKI'S PENCHANT FOR VINTAGE LUXE. THE TWO SYMMETRICAL FLUTED GLASS SHADES ARE PINCHED IN THE MIDDLE CREATING A BOW SHAPE WHICH CAN BE USED HORIZONTALLY OR VERTICALLY.



MARTIN
BRUDNIZKI

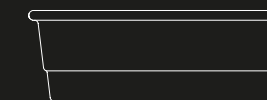
Their simple, architectural aesthetic acknowledges design tradition whilst subtly extending Drummonds' portfolio into more contemporary ergonomic forms and new materials.

THE TYBURN BATH IS FORMED FROM 80% NATURAL STONE WHICH GIVES IT ITS SWEEPING CURVES AND UNIQUELY SILKY SMOOTH FINISH.



(← Left)

SYMMETRICAL ON THE OUTSIDE, THE TYBURN BATH HAS AN ASYMMETRIC INTERIOR WITH TWO DIFFERENTLY SHAPED ENDS; ONE SLOPED FOR RECLINING AND ONE MORE UPRIGHT FOR SITTING UP. THE PROFILE FEATURES A DISTINCTLY ROUNDED EDGE, SUBTLY SCOOPED FOR A COMFORTABLE HEADREST WHEN BATHING.



PG.	GALLERY INDEX.
38.	TOWNHOUSE London, England
40.	VICTORIAN TERRACE HOUSE South-West London
44.	COUNTRY HOUSE Copenhagen, Denmark
46.	GEORGIAN FARMHOUSE Cotswolds, England
48.	TOWNHOUSE Maida Vale, London
52.	SHOWER ROOM Marylebone, London
54.	CALIFORNIAN RETREAT Loz Feliz, Los Angeles
56.	VICTORIAN TOWNHOUSE Notting Hill, London
60.	MASTER BATHROOM South-West London
62.	CLASSIC TUDOR HOUSE Surrey, England
66.	GEORGIAN HOUSE Perthshire, Scotland
68.	URBAN RETREAT HAMMAM AT HARRODS Knightsbridge, London
70.	VICTORIAN TOWNHOUSE West London
72.	SHOOTING LODGE Ross-Shire, Scotland
76.	FORTER CASTLE Glenisla, Scotland
78.	GEORGIAN MANSION Surrey, England
82.	COUNTRY HOUSE Gloucestershire, England
86.	TOWNHOUSE Belgravia, London
88.	VICTORIAN HOUSE North London
92.	INDUSTRIAL CONVERSION Victoria, London
94.	CONTAINER HOUSE Okinawa, Japan
98.	COUNTRY FARMHOUSE Devon, England
100.	LOFT CONVERSION West London
102.	TOWNHOUSE London
104.	COUNTRY MANOR Surrey, England
106.	COUNTRY ESTATE Scotland
108.	TOWNHOUSE Primrose Hill, London

With our beautiful products and the creative imagination of our customers it’s always very inspiring to see these projects come to life. That’s why we created a gallery which is designed to inspire and inform the process of creating the perfect bathroom.

No.3 Gallery



OPPOSITE.
THE HUMBER BATH
CLASSIC BATH TAPS WITH H-STAND

Townhouse
London, England



Victorian Terrace House South-West London



THE DOUBLE CRAKE
VANITY BASIN



BELOW.
THE DALBY SHOWER



LEFT.
THE DOUBLE LOWTHER
VANITY BASIN

THE USK BATH

BELOW.
THE SPEY BATH



THE DALBY SHOWER

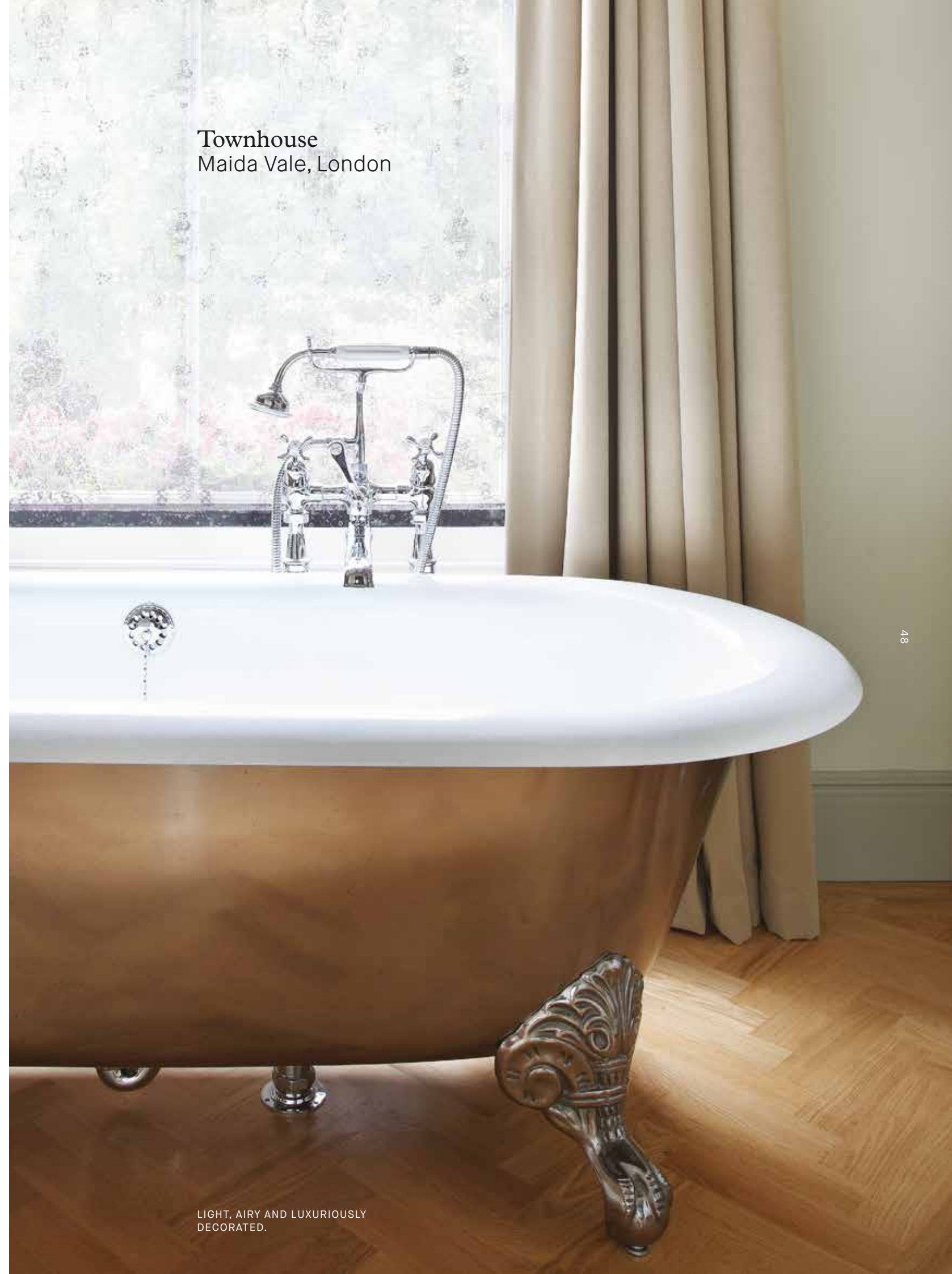


Georgian Farmhouse Cotswolds, England

THERE'S ROOM FOR TWO IN THIS COUNTRY CLASSIC BATHROOM, WITH DOUBLE SHOWERS AND OUR LARGEST FREESTANDING BATH.
Designed by MILLY GOODWIN



Townhouse
Maida Vale, London





THE CARBON SHOWER

BELOW.
THE SPEY BATH





Shower Room Marylebone, London



ABOVE.
THE SINGLE HEBDERN VANITY BASIN

A SMALL BUT PERFECTLY CREATED SHOWER ROOM WITH INDUSTRIAL
STYLE GLASS AND METAL FRAMED SHOWER DOORS WHICH LEND AN
AIR OF URBAN CHIC ALONGSIDE THE HAND GLAZED PERIOD STYLE
TILES IN RICH BLUE HUES. Designed by WALDO WORKS



Californian Retreat Loz Feliz, Los Angeles

A STRIKING BLACK AND WHITE COLOUR SCHEME
EXUDES THE GLAMOUR OF BEVERLY HILLS.
Designed by DEIRDRE DOHERTY



Victorian Townhouse
Notting Hill, London

BELOW & LEFT.
THE SPEY BATH



SOFT SALMON PINK AND CHALKY GREY ARE
PAIRED WITH BOLD BLUE AND GREEN HUES AND
BRASS FITTINGS.

BELOW.
CLASSIC BATH & SHOWER
MIXER



ABOVE.
6-BAR FLOOR TO WALL
TOWEL RAIL



THE COLLECTION
2016—17

ABOVE.
THE TAY BATH

Master Bathroom
South-West London



ABOVE.
THE DOUBLE CRAKE
VANITY BASIN



SPACIOUS AND AIRY BATHROOM WITH LARGE WINDOWS
MAXIMISING THE NATURAL LIGHT BUT ALSO ALLOWING
THE BATHER TO TAKE FULL ADVANTAGE OF THE WONDERFUL
VIEWS OUTSIDE WHILST RELAXING IN THE BATH.

LEFT.
THE CHESSLETON
SHOWER

Classic Tudor House
Surrey, England

61

THE COLLECTION
2016—17

ABOVE.
CLASSIC BATH TAPS

BELOW.
THE CLYDE BATH



62

THE CLASSIC STYLING OF THIS BATHROOM
IS SYMPATHETIC TO THE DISTINCTIVE ORIGINAL
FEATURES OF THE SPACE.



THE COLLECTION
2016—17

ABOVE.
THE DOUBLE LOWTHER
VANITY BASIN

BELOW.
THE CARRON
SHOWER



CLASSIC TUDOR HOUSE
SURREY, ENGLAND



Georgian House
Perthshire, Scotland

THE COLLECTION
2016—17

LEFT.
THE SPEY BATH

BELOW.
THE DOUBLE LOWTHER VANITY BASIN
THE DALBY SHOWER



WOOD AND TILING WORK TOGETHER TO CREATE A SPLITLEVEL
BATHROOM OF UNQUESTIONABLE ELEGANCE.
Designed by BRACO DESIGN

BELOW.
THE DALBY SHOWER

Urban Retreat
Hammam at Harrods
Knightsbridge, London



Victorian Townhouse
West London

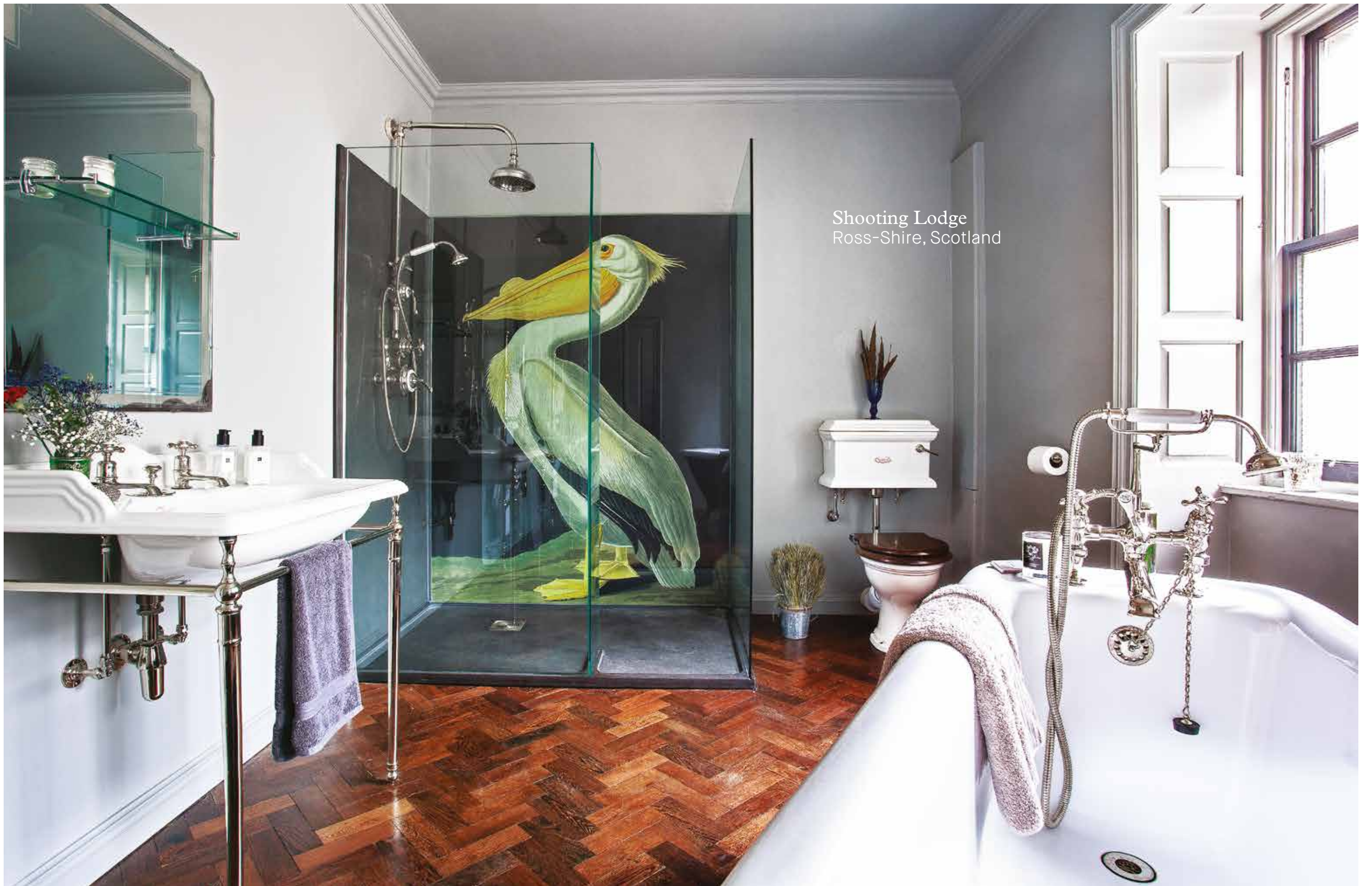
THE COLLECTION
2016—17

LEFT.
THE HUMBER BATH
THE DEE SHOWER

BELOW.
THE DOUBLE LOWTHER
VANITY BASIN



A MUTED COLOUR PALETTE AND LOTS OF NATURAL
LIGHT CAPTURE THE ESSENCE OF PURE RELAXATION.
Designed by SOPHIE ROGERSON OF RFR PROPERTY



Shooting Lodge
Ross-Shire, Scotland

BELOW.
THE CLYDE BATH



THE COLLECTION
2016—17



SHOOTING LODGE
ROSS-SHIRE, SCOTLAND

5-BAR FLOOR TO WALL TOWEL RAIL



Forter Castle
Glenisla, Scotland

BELOW.
THE DOUBLE LOWTHER
VANITY BASIN



Georgian Mansion Surrey, England



THE SPITAL SHOWER



LEFT,
THE TORRIDGE
BATH

Country House
Gloucestershire, England



BELOW.
THE NAVER BASIN



THE COLLECTION
2016—17



COUNTRY HOUSE
GLOUCESTERSHIRE, ENGLAND

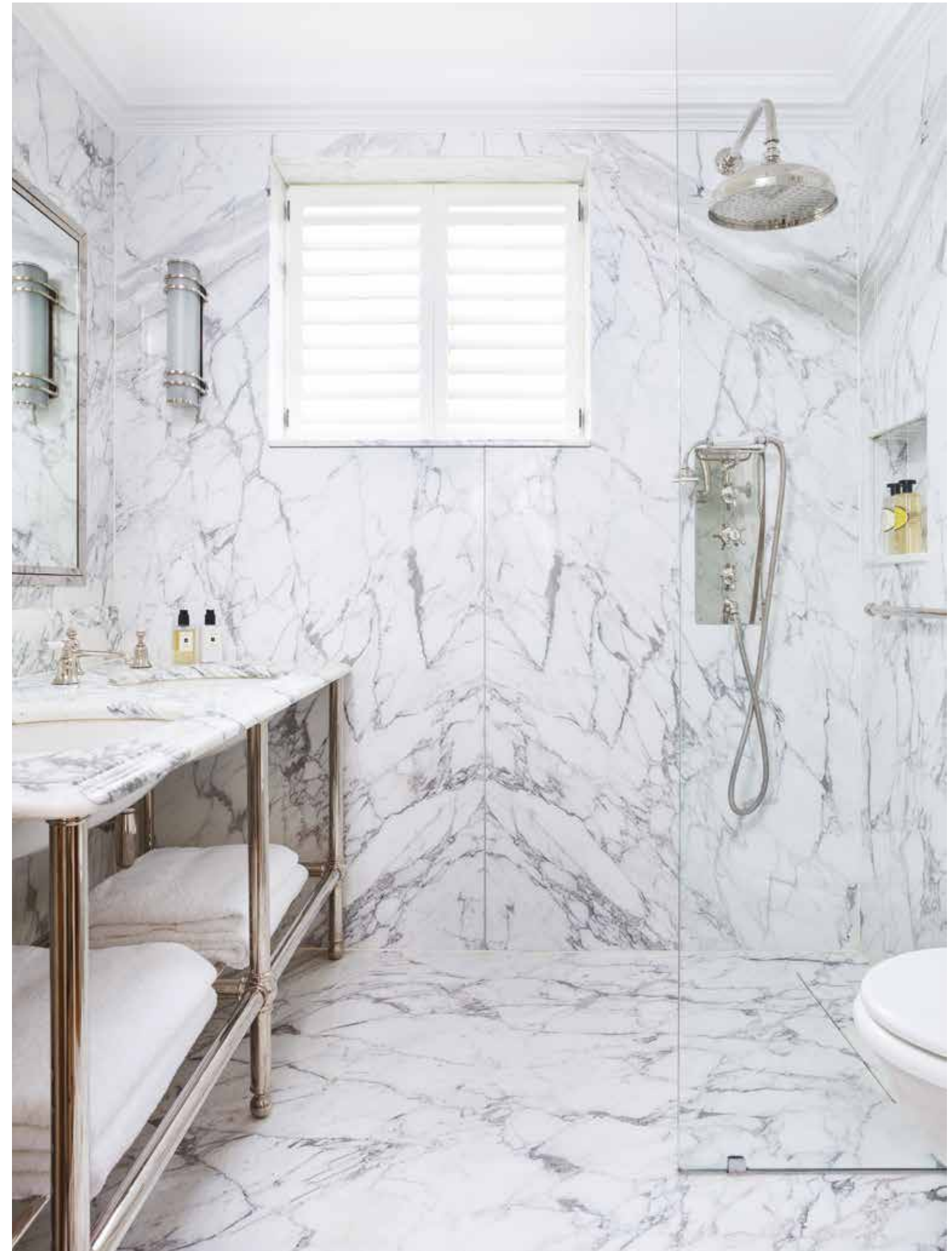
ABOVE.
THE BRORA WC SUITE

Townhouse
Belgravia, London



LEFT & RIGHT,
THE DOUBLE CRAKE
BASIN

THE CARRON
SHOWER





Victorian House
North London

BELOW.
THE NAVER BASIN



THE COLLECTION
2016—17



VICTORIAN HOUSE
NORTH LONDON

ABOVE.
THE CARRON SHOWER



BELOW.
THE USK BATH

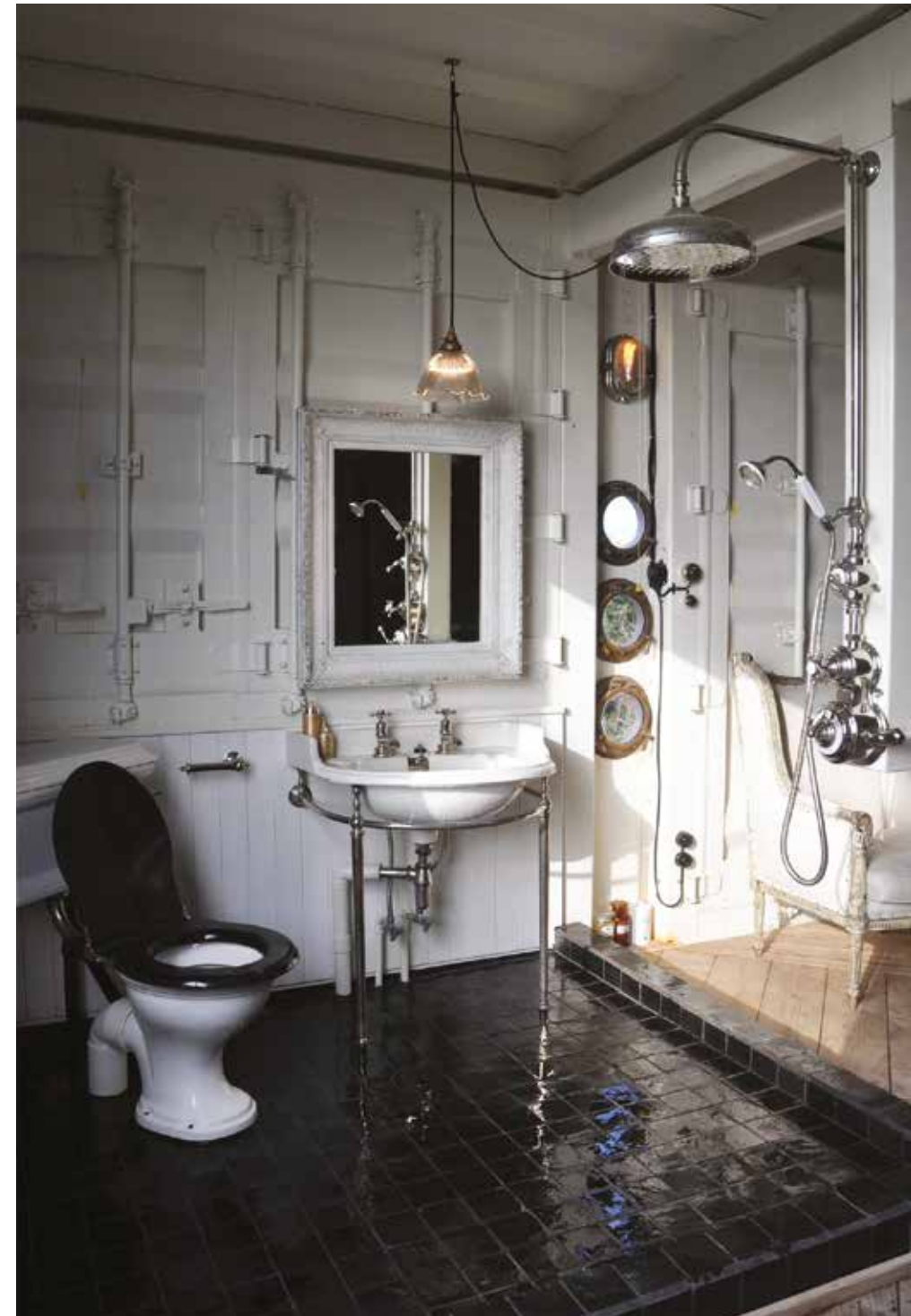


Container House
Okinawa, Japan



LEFT.
THE SPEY BATH

BELOW.
THE KINLOCH BASIN
THE DALBY SHOWER





Country Farmhouse
Devon, England

THE COLLECTION
2016—17

ABOVE,
THE TORRRIDGE BATH

DECORATED IN A STYLE THAT ENCAPSULATES
THE LIGHT AND AIRY BEAUTY OF THE COUNTRYSIDE,
WITH LIGHT TONES AND NATURAL MATERIALS.

BELOW.
THE USK BATH



Loft Conversion West London



AN ATTIC CONVERSION INTO A LARGE OPEN-PLAN MASTER BEDROOM SUITE INSPIRED BY THE IDEA OF A MANHATTAN LOFT, CREATING A LARGE, CALM SPACE WITH A BRIGHT AIRY FEEL.

ABOVE.
CLASSIC BATH AND
SHOWER MIXER



LEFT,
THE HUMBER BATH

THE CHESSETON FLOOR STANDING
BATH & SHOWER MIXER

Townhouse
London

SUNSHINE YELLOW AND DELICATE FLORALS
MAKE FOR A SUNNY, SUMMERY BATHROOM.

THE COLLECTION
2016—17

Country Manor
Surrey, England

103

THE COLLECTION
2016—17



104

SURROUNDED BY HISTORY AND DESIGN HERITAGE,
THIS IS THE EPITOME OF LUXURIOUS BATHING.

ABOVE.
THE TAY BATH

BELOW.
THE SPEY BATH



105

Country Estate Scotland



THE DALBY SHOWER



Townhouse
Primrose Hill, London

THE COLLECTION
2016—17

ABOVE.
THE USK BATH

BELOW.
CLASSIC BATH TAPS



MERGING ALL THE ROOMS ON THE FIRST FLOOR CREATED
A LARGE OPEN BATHROOM, BEDROOM AND DRESSING ROOM.



LDN

CHELSEA SHOWROOM

642 Kings Road
London SW6 2DU
T +44 (0)20 7376 4499

NOTTING HILL SHOWROOM

27 Chepstow Corner
London W2 4XE
T +44 (0)20 7376 4770

HEAD OFFICE

Unit 2C, Henley Business Park
Pirbright Road, Normandy
Surrey GU3 2DX
T +44 (0)1483 237 202

NYC

NEW YORK SHOWROOM

The D&D Building
Suite 111, The Annex, 222 East
59th Street, New York, NY 10022
T +1 (212) 794 0157

For all sales and order enquiries please contact:
info@drummonds-uk.com

DRUMMONDS -UK.COM