



DRUMMONDS

LONDON • ENGLAND

The Collection 2017-18

Makers of bathrooms for 30 years



Using our own factories, our own craftsmen and our traditional manufacturing techniques, Drummonds continue to define classic bathroom style.

Exciting new products come from both our in-house design team and our collaborations with leading product designers including Martin Brudnizki. His latest collection for us, Leawood, introduces a chic, new minimalist aesthetic to our taps and showers range. We've also turned our attention to smaller bathrooms, developing some great new products for compact spaces.

2018 sees us continuing to evolve the hallmark Drummonds style you'll see throughout this Lookbook. Placing the emphasis on quality of manufacture and design, we're inspiring the bathrooms of today through the very best of yesterday.

DRUMMOND SHAW
FOUNDER

06 – 29

N01 **Manufacturing** **Iron/Clay/Brass**

30 – 43

N02 **Design**

44 – 145

N03 **Gallery**

146 – 213

N04 **Pricing &** **Specifications**



The roots of Drummonds are deep in craft and design heritage, reaching far beyond our 28 years as makers of bathrooms. Inspired by the Victorian foundries of generations past, Drummond Shaw founded Drummonds not simply to create classic and beautiful bathroom pieces, but to rediscover the lost art of making them.

No1 Manufacturing

Each one of Drummonds' bathroom products is manufactured by us in our own factories using time-honoured, handmade processes.

Today we are proud to design and make all of our own classic pieces. Each design is steeped in history, but with a quality that ensures a future legacy.



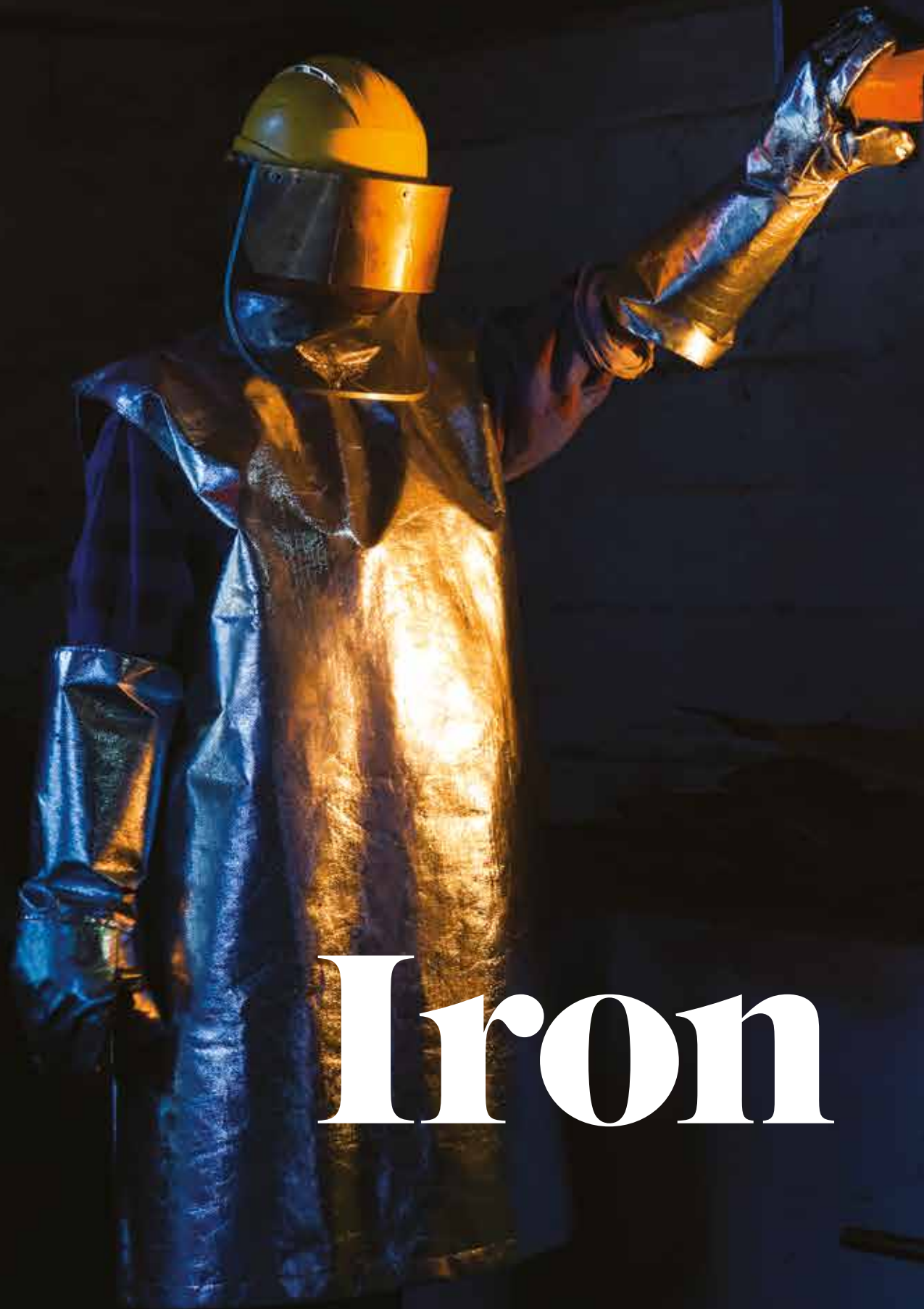
SHOT BLASTING IN
ISOLATION.

MANUFACTURING.

Each design is steeped in history, but with a quality that ensures a future legacy. At Drummonds we look to the past to design for the future and we believe the antiques of tomorrow are being made by us today.



POLISHING OF THE BATH FEET.



Iron

Each Drummonds' bath is crafted from hand-poured cast iron, using the time-honoured sandcasting technique first used in the finest Victorian foundries.



HAND FITTING THE BATH FEET ENSURES A PERFECT FIT.





EACH BATH IS HEATED TO 960°C
SEVERAL TIMES DURING THE
ENAMELLING PROCESS.

Enamelling and hand-finishing each bath is a process where attention to detail is key. Our unique powdered enamel is sprinkled by hand up to five layers thick, resulting in the beautiful, undulating finish that forms the interior of our baths.



Clay



CLAY ARTISTRY.

All Drummonds' ceramics, large and small are crafted using the finest quality English China Clay. Each piece is finished and glazed by hand, giving its own individual character.



HAND SPRAYING THE GLAZE PRIOR TO FIRING.

THE COLLECTION
2017—18



TEMPLATING EACH DESIGN TO ENSURE
THE CUT IS PERFECT.

MANUFACTURING



Brass



24

25

Lost wax casting, a fine art rediscovered. Each and every piece of Drummonds' brassware, from a tap head to a towel rail, is hand carved in wax prior to casting. This traditional method allows extremely fine detail to be reproduced exactly as intended.



A COCOON IS BUILT UP TO COAT THE WAX MODEL.



THE ART OF POLISHING LIES IN THE SKILL OF THE POLISHER.



QUALITY STARTS IN THE FINE DETAIL OF THE WAX MODEL.

FINAL CHECKING PRIOR
TO ASSEMBLY.

28

29

THE COLLECTION
2017—18

MANUFACTURING

No2 Design

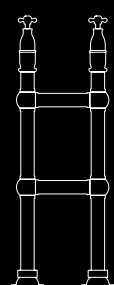


(← Left)

THE SHAPE OF OUR USK ROLL TOP BATH IS BASED ON A CLASSIC 18TH CENTURY DESIGN, KNOWN POPULARLY AS A BATEAU OR 'BOAT BATH'.

AUTHENTIC DESIGN.

Discover for yourself our time-honoured, hand-crafted manufacturing methods, as we share with you not only our products but our design heritage which extends well beyond our 29 years as manufacturers. From our free-standing cast iron baths to our English chinaware and lost-wax cast brassware, we are proud to design and make classic products that stand the test of time.



(↑ Above)

LARGE AND BEAUTIFULLY FORMED, THESE CLASSIC BATH TAPS ARE A STUNNING ADDITION TO ANY BATHROOM.

THE COLLECTION
2017—18



(↑ Above)

NAMED WHILST FLY-FISHING IN THE FAMOUS SCOTTISH RIVER, THE SPEY IS OUR LARGEST, LONGEST AND MOST LUXURIOUS FREESTANDING CAST IRON BATH.

DESIGN



(← Left)
THE SINGLE THAMES VANITY
BASIN SUITE.



(↑ Above)
THE HAMMERED COPPER
WYE BATEAU CAST IRON
BATH TUB.

(↓ Below)
THE TYNE COPPER BATH TUB.



(← Left)
THE THURSO
FREESTANDING SHOWER.



(↑ Above)

THE SERPENTINE CAST IRON SKIRTED BATH TUB.

(↓ Below)

THE BOURNE VANITY BASIN.



(↑ Above)

THE BUTE CAST IRON BATH TUB WITH STEEL SURROUND.

(↓ Below)

THE TYNE COPPER BATH TUB.

(↓ Below)

THE WANDLE SINGLE ENDED SKIRTED CAST IRON BATH TUB.

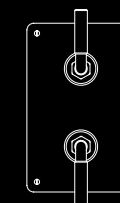


2015 marked our first collection launch with world renowned interior architect & product designer Martin Brudnizki and his product design studio, And Objects, heralding the beginning of an exciting product collaboration between the prestigious designer and our Drummonds brand.

(↓ Below)

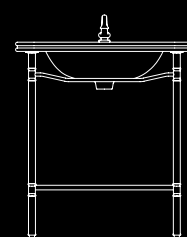
THE LEAWOOD TAP AND SHOWER COLLECTION WAS AN ERGONOMIC ASSESSMENT, EXAMINING BOTH FUNCTION AND THE MOST NATURAL WAY IN WHICH HANDLES ARE GRIPPED OR TURNED. THIS RESULTED IN THE SIMPLE, CURVED SHAPES WHICH DISTINGUISH THE LEAWOOD COLLECTION.

VISUALLY MODERN, CLEAN AND SIMPLE, THE LEAWOOD TAP AND SHOWER COLLECTION RETAINS A TIMELESSNESS, WHILST AT THE SAME TIME INTRODUCING CRUCIAL DETAILING WHICH UNDERLINES A CONTEMPORARY FOCUS.

MARTIN
BRUDNIZKI

The Leawood range of taps & showers by Martin Brudnizki was introduced in 2017 and these are the latest pieces in his sophisticated collection, which draws upon our British dedication to traditional artistry, modern technology & exquisite materials.

DESIGN



(↑ Above)

ELEGANT, LIGHT AND MODERN, AND WITH CLASSIC WHITE MARBLE THE LADYBOWER IS ANOTHER PRODUCT FROM THE COLLABORATION WITH INTERIOR ARCHITECT AND PRODUCT DESIGNER MARTIN BRUDNIZKI.

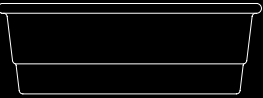
THE COLLECTION
2017—18

THE TYBURN BATH IS FORMED FROM 80% NATURAL
STONE WHICH GIVES IT ITS SWEEPING CURVES AND
UNIQUELY SILKY SMOOTH FINISH.



(← Left)

SYMMETRICAL ON THE OUTSIDE, THE TYBURN BATH
HAS AN ASYMMETRIC INTERIOR WITH TWO DIFFERENTLY
SHAPED ENDS; ONE SLOPED FOR RECLINING AND
ONE MORE UPRIGHT FOR SITTING UP. THE PROFILE
FEATURES A DISTINCTLY ROUNDED EDGE, SUBTLY
SCOOPED FOR A COMFORTABLE HEADREST WHEN
BATHING.

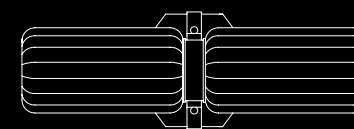


MARTIN
BRUDNIZKI

41

40

THE WANDLE BATH IS HIS NEW LOOK AT A TRADITIONAL FORM.



(↓ Below)

PART OF THE 'MARTIN BRUDNIZKI FOR DUMMONDS' COLLECTION, THE DERWENT LIGHT CHANNELS BRUDNIZKI'S PENCHANT FOR VINTAGE LUXE. THE TWO SYMMETRICAL FLUTED GLASS SHADES ARE PINCHED IN THE MIDDLE CREATING A BOW SHAPE WHICH CAN BE USED HORIZONTALLY OR VERTICALLY.



(↑ Above)

ERGONOMICALLY DESIGNED AROUND THE HUMAN FORM, THE SLOPING END IS THE SAME WIDTH FROM TOP TO BOTTOM, TO ACCOMMODATE SHOULDERS, AND HAS THE IDEAL SLOPE TO ALLOW THE HEAD TO REST COMFORTABLY. THE PERFECT BATH FOR RESTFUL READING OR SOAKING, THE WANDLE BATH COMES WITH EITHER A SKIRT, WHICH BRINGS THE BATH LOWER TO THE FLOOR WITH A MORE MODERN FEEL OR WITH FEET, GIVING A CLASSIC LOOK. SYMMETRICAL ON THE OUTSIDE.

THE COLLECTION
2017—18



DESIGN

MARTIN
BRUDNIZKI

43

42

- 46. MODERN TOWNHOUSE Hampstead, London
- 48. VICTORIAN TERRACE HOUSE Clapham, London
- 52. COUNTRY HOUSE Copenhagen, Denmark
- 54. GEORGIAN FARMHOUSE | Designed by MILLY GOODWIN Cotswolds, Oxfordshire
- 58. URBAN TOWNHOUSE | Designed by DRUMMONDS Highgate, London
- 60. PARISIAN TOWNHOUSE Maida Vale, London
- 62. ENSUITE SHOWER ROOM | Designed by WALDO WORKS Marylebone, London
- 64. CALIFORNIAN RETREAT | Designed by DEIRDRE DOHERTY Los Feliz, Los Angeles
- 66. VICTORIAN TOWNHOUSE Notting Hill, London
- 70. TERRACE HOUSE MASTER BATHROOM | Designed by BRACO DESIGN Wandsworth, London
- 74. CLASSIC ENGLISH TUDOR HOUSE Guildford, Surrey
- 78. RICHMOND COUNTRY HOUSE | Designed by TODHUNTER EARLE London
- 80. GEORGIAN HOUSE | Designed by BRACO DESIGN Perthshire, Scotland
- 82. URBAN RETREAT HAMMAM AT HARRODS Knightsbridge, London
- 84. NEUTRAL BATHROOM TOWNHOUSE | Designed by RFR PROPERTY Balham, London
- 86. SHOOTING LODGE Ross-Shire, Scotland
- 90. GEORGIAN HOUSE | Designed by SPENCER SWAFFER ANTIQUES Chichester, West Sussex
- 92. FORTER CASTLE | Designed by KATHARINE POOLEY Glenisla, Scotland
- 94. GEORGIAN MANSION Esher, Surrey
- 98. ROOMY ENSUITE COUNTRY HOUSE | Designed by JOANNA PLANT Twickenham, London
- 100. COUNTRY ESTATE Canterbury, Kent
- 102. BELGRAVIA TOWNHOUSE | Designed by BRACO DESIGN London
- 104. MID-CENTURY MODERN VICTORIAN HOUSE Highgate, London
- 108. INDUSTRIAL CONVERSION | Designed by MARC NEWSON Victoria, London
- 110. MINIMALISTIC LOFT CONVERSION | Designed by MANDARIN STONE Chelsea, London
- 112. CONVERTED CONTAINER HOUSE | Designed by TOMOAKI KOGA Okinawa, Japan
- 116. COUNTRY FARMHOUSE Ilfracombe, Devon
- 118. LOFT CONVERSION Shepherd Bush, London
- 120. SUMMERY CITRUS TOWNHOUSE Fulham, London
- 122. COUNTRY MANOR Redhill, Surrey
- 124. COUNTRY ESTATE Edinburgh, Scotland
- 126. OPEN PLAN BATHROOM Primrose Hill, London
- 128. GEORGIAN COUNTRY HOUSE Morden, Dorset
- 130. SOPHISTICATED TOWNHOUSE Richmond, London
- 132. GRADE I LISTED GEORGIAN HALL | Designed by KW INTERIORS Lancaster, Lancashire
- 136. TOWNHOUSE REMODEL WITH INDUSTRIAL EDGE Kew, London
- 138. CONTEMPORARY TERRACE HOUSE | Designed by PAINT & PAPER LIBRARY Syon Park, London
- 140. FOUR STOREY TOWNHOUSE Pimlico, London
- 142. TRADITIONAL CLOAKROOM Kensington, London

With our beautiful products and the creative imagination of our customers it’s always very inspiring to see these projects come to life. That’s why we created a gallery which is designed to inspire and inform the process of creating the perfect bathroom.

No.3 Gallery



OPPOSITE.
THE HUMBER CAST IRON SKIRTED BATH TUB
(PAGE 151)
THE MULL CLASSIC BATH TAPS & H-STAND
(PAGE 156)

Modern Townhouse
Hampstead, London



ABOVE.
THE DALBY SURFACE MOUNTED SHOWER
(PAGE 165)

OPPOSITE.
THE TAY CAST IRON SKIRTED BATH TUB (PAGE 151)

Victorian Terrace House Clapham, London



THE DOUBLE CRAKE
VANITY BASIN SUITE (PAGE 183)



BELOW.
THE DALBY SURFACE
MOUNTED SHOWER
WITH CURVED ARM
(PAGE 165)



LEFT.
THE DOUBLE LOWTHER
VANITY BASIN SUITE (PAGE 183)

THE USK BATEAU CAST IRON BATH TUB
(PAGE 150)

BELOW.
THE SPEY CAST IRON BATH TUB
WITH BALL & CLAW FEET
(PAGE 149)



THE DALBY SURFACE MOUNTED SHOWER WITH STRAIGHT ARM (PAGE 165)



Georgian Farmhouse
Cotswolds, Oxfordshire
Designed by MILLY GOODWIN

THERE'S ROOM FOR TWO IN THIS COUNTRY
CLASSIC BATHROOM, WITH DOUBLE SHOWERS
AND OUR LARGEST FREESTANDING BATH.

BELOW.
THE NAVER CHINA
VANITY BASIN (PAGE 179)



THE COLLECTION
2017—18



GEORGIAN FARMHOUSE
COTSWOLDS, OXFORDSHIRE

ABOVE.
THE BRORA HIGH LEVEL WC SUITE (PAGE 195)



Urban Townhouse Highgate, London Designed by DRUMMONDS

THIS TOWNHOUSE BATHROOM HAS A SOPHISTICATED URBAN
EDGE, SET WITHIN A SIMPLE, MODERN INTERIOR, PUTTING ALL THE
DESIGN FOCUS ONTO THE GLEAMING BRASS, MARBLE & CHINA.

BELOW & OPPOSITE:
THE SPEY CAST IRON BATH TUB
WITH BALL & CLAW FEET
(PAGE 149)



THE COLLECTION
2017—18



Parisian Townhouse
Maida Vale, London

LIGHT, AIRY AND LUXURIOUSLY
DECORATED.

Ensuite Shower Room
Marylebone, London
Designed by WALDO WORKS



ABOVE.
THE NENE SHOWER
(ARCHIVED PRODUCT)



ABOVE.
THE SINGLE HEBDERN VANITY BASIN SUITE (PAGE 181)

A SMALL BUT PERFECTLY CREATED SHOWER ROOM WITH INDUSTRIAL
STYLE GLASS AND METAL FRAMED SHOWER DOORS WHICH LEND AN
AIR OF URBAN CHIC ALONGSIDE THE HAND GLAZED PERIOD STYLE
TILES IN RICH BLUE HUES.



Californian Retreat
Los Feliz, Los Angeles
Designed by DEIRDRE DOHERTY

A STRIKING BLACK AND WHITE COLOUR SCHEME
EXUDES THE GLAMOUR OF BEVERLY HILLS.



Victorian Townhouse
Notting Hill, London

BELOW & LEFT.
THE SPEY CAST IRON BATH TUB
WITH BALL & CLAW FEET
(PAGE 149)



BELOW.
THE MULL CLASSIC BATH &
SHOWER MIXER (PAGE 155)



ABOVE.
6-BAR FLOOR MOUNTED
TOWEL RAIL (PAGE 204)



THE COLLECTION
2017—18

ABOVE.
THE TAY CAST IRON
SKIRTED BATH TUB
(PAGE 151)

Terrace House Master Bathroom Wandsworth, London Designed by BRACO DESIGN



ABOVE.
THE DOUBLE CRAKE
VANITY BASIN SUITE (PAGE 183)



SPACIOUS AND AIRY BATHROOM WITH LARGE WINDOWS
MAXIMISING THE NATURAL LIGHT BUT ALSO ALLOWING
THE BATHER TO TAKE FULL ADVANTAGE OF THE WONDERFUL
VIEWS OUTSIDE WHILST RELAXING IN THE BATH.

LEFT.
THE BRORA HIGH LEVEL
WC SUITE (PAGE 195)

BELOW.
THE CHESSLETON SHOWER
(PAGE 167)

72



73

ABOVE.
THE CHESSLETON SHOWER
DIVERTERS (PAGE 166)



Classic English Tudor House
Guildford, Surrey

74

ABOVE.
THE MULL CLASSIC BATH TAPS (PAGE 156)



BELOW.
THE CLYDE SINGLE ENDED CAST
IRON BATH TUB (PAGE 149)

75



THE COLLECTION
2017—18

ABOVE.
THE DOUBLE LOWTHER
VANITY BASIN SUITE (PAGE 183)

BELOW.
THE CARRON
SHOWER (ARCHIVED PRODUCT)



CLASSIC ENGLISH TUDOR HOUSE
GUILDFORD, SURREY

RIGHT.
THE SWALE CAST IRON BATH TUB WITH
BALL & CLAW FEET (PAGE 149)

Richmond Country House
London
Designed by TODHUNTER EARLE

THE COLLECTION
2017—18



A MUTED COLOUR PALETTE & WHITE WALLS PAIRED WITH A LIGHT WOOD
FLOOR OPEN THE BATHROOM UP TO MAXIMISE THE NATURAL LIGHT.



Georgian House
Perthshire, Scotland
Designed by BRACO DESIGN

THE COLLECTION
2017—18

LEFT.
THE SPEY CAST IRON BATH TUB WITH
BALL & CLAW FEET (PAGE 149)

BELOW.
THE DOUBLE LOWTHER VANITY BASIN SUITE (PAGE 183)
THE DALBY SURFACE MOUNTED SHOWER (PAGE 165)



WOOD AND TILING WORK TOGETHER TO CREATE A SPLITLEVEL
BATHROOM OF UNQUESTIONABLE ELEGANCE.

BELOW.
THE DALBY SURFACE MOUNTED SHOWER
(PAGE 165)

Urban Retreat
Hammam at Harrods
Knightsbridge, London



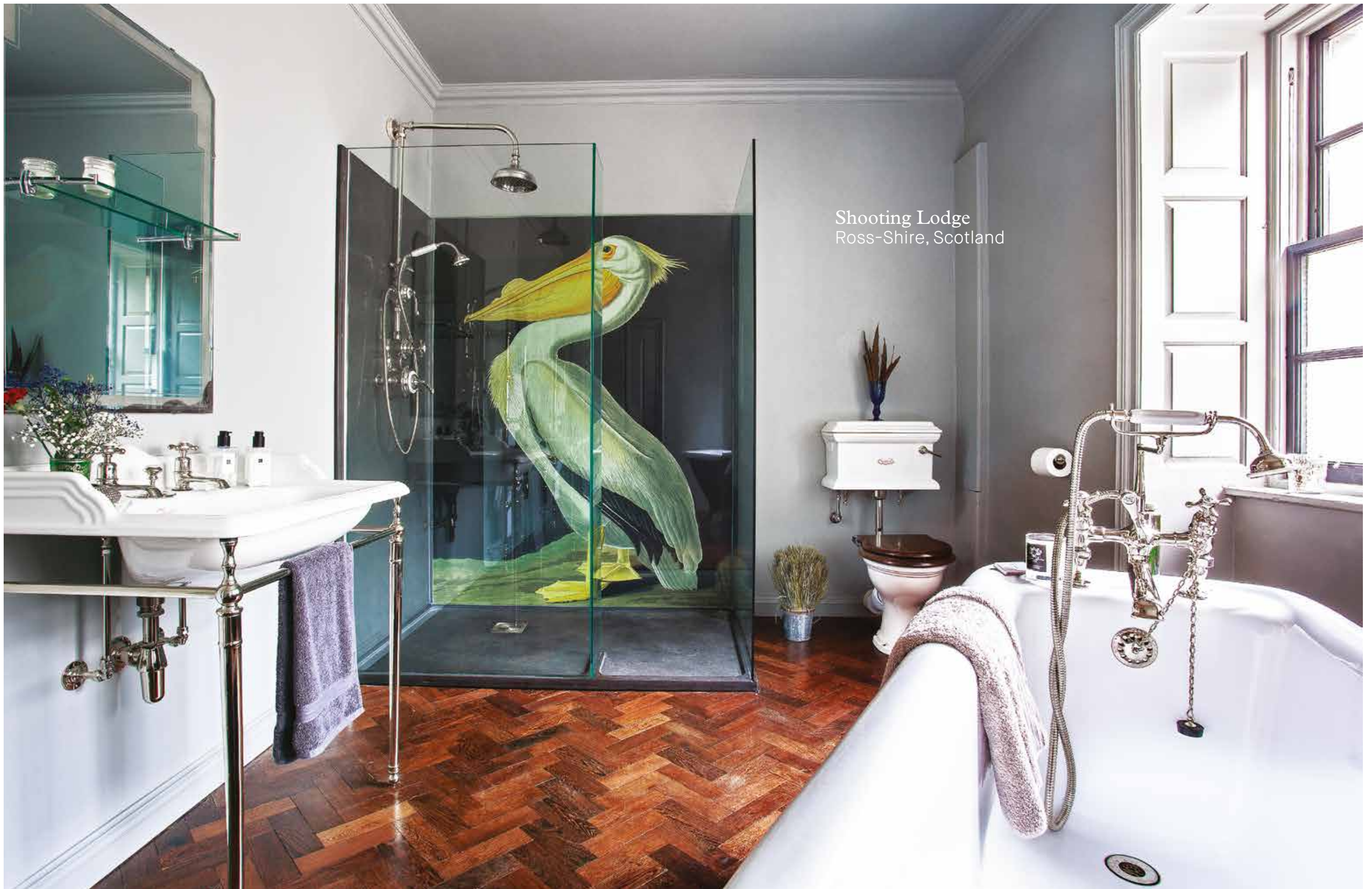
Neutral Bathroom Townhouse
Balham, London
Designed by RFR PROPERTY

LEFT.
THE HUMBER CAST IRON SKIRTED
BATH TUB (PAGE 151)

BELOW.
THE DOUBLE LOWTHER VANITY BASIN SUITE (PAGE 183)
THE EDEN LOW LEVEL WC SUITE (PAGE 195)



A MUTED COLOUR PALETTE AND LOTS OF NATURAL
LIGHT CAPTURE THE ESSENCE OF PURE RELAXATION.



BELOW.
THE CLYDE SINGLE ENDED CAST IRON
BATH TUB (PAGE 149)



Georgian House
Chichester, West Sussex
Designed by SPENCER SWAFFER ANTIQUES





Forter Castle
Glenisla, Scotland
Designed by KATHARINE POOLEY

AT ONCE BOTH ELEGANT AND MASCULINE, THE FINEST
FINISHINGS AVAILABLE WENT INTO FORTER.

BELOW.
THE SPITTAL FREESTANDING SHOWER
(PAGE 163)

Georgian Mansion
Esher, Surrey

RIGHT.
THE TORRIDGE CAST IRON BATH TUB
WITH BALL & CLAW FEET (PAGE 149)

LEFT,
THE TORRIDGE CAST IRON BATH TUB
WITH BALL & CLAW FEET (PAGE 149)

BELOW,
THE DOUBLE LOWTHER VANITY
BASIN SUITE (PAGE 183)



THE COLLECTION
2017—18



GEORGIAN MANSION
ESHER, SURREY

Roomy Ensuite Country House
Twickenham, London
Designed by JOANNA PLANT



BELOW.
THE DOUBLE LADYBOWER VANITY BY
MARTIN BRUDNIZKI (PAGE 185)

Country Estate Canterbury, Kent



THE COLLECTION
2017—18



THE DESIGN FOR THE BATHROOM IS TRULY UNIQUE IN
THAT THE SPACE IS BEING USED AS BOTH THE BEDROOM
AND THE BATHROOM.

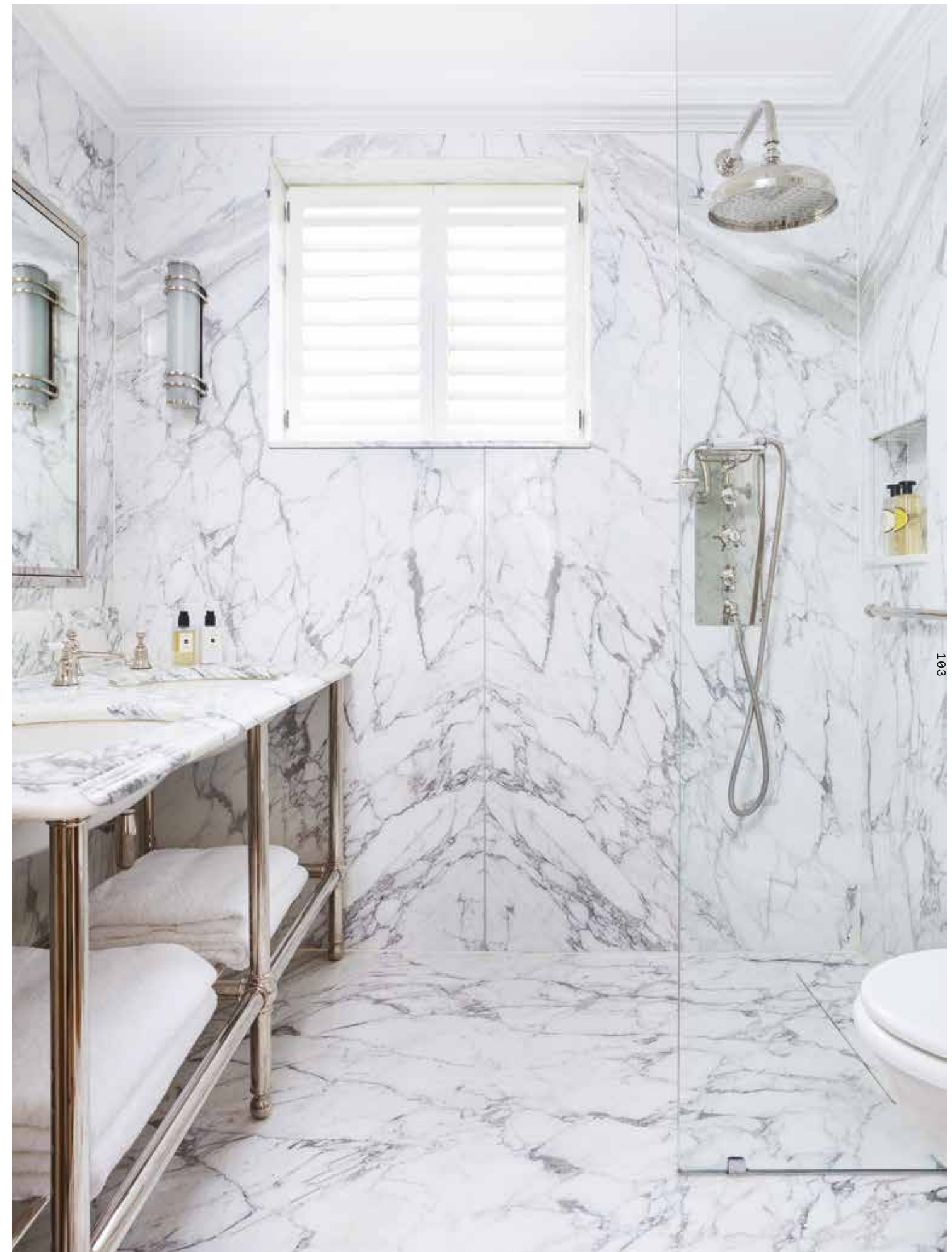
ABOVE.
THE TYBURN STONE BATH TUB BY
MARTIN BRUDNIZKI (PAGE 152)



LEFT & RIGHT,
THE DOUBLE CRAKE VANITY
BASIN SUITE (PAGE 183)

THE CARRON
SHOWER (ARCHIVED PRODUCT)

Belgravia Townhouse
London
Designed by BRACO DESIGN





BELOW.
THE NAVER CHINA
VANITY BASIN (PAGE 179)



THE COLLECTION
2017—18



MID-CENTURY MODERN VICTORIAN HOUSE
HIGHGATE, LONDON

ABOVE.
THE CARRON SHOWER (ARCHIVED
PRODUCT)

Industrial Conversion
Victoria, London
Designed by MARC NEWSON

BELOW.
THE USK BATEAU CAST
IRON BATH TUB (PAGE 150)

THE COLLECTION
2017—18

ITALIAN CARRARA MARBLE JOINS THE WALLS AND FLOORS
IN A SEAMLESS CURVE, ALLOWING THE BATH TO STAND OUT
AS THE CENTRAL FOCAL POINT.

Minimalistic Loft Conversion
 Chelsea, London
 Designed by MANDARIN STONE



LEFT & RIGHT,
 THE SINGLE CHINA WINDERMERE
 VANITY BASIN (PAGE 182)

THE TYBURN STONE BATH TUB
 BY MARTIN BRUDNIZKI (PAGE 152)

THE CHESSLETON FLOOR STANDING
 BATH & SHOWER MIXER (PAGE 158)





Converted Container House
Okinawa, Japan
Designed by TOMOAKI KOGA



LEFT.
THE SPEY CAST IRON BATH TUB
WITH BALL & CLAW FEET (PAGE 149)

BELOW.
THE KINLOCH CHINA VANITY BASIN (PAGE 179)
THE DALBY SURFACE MOUNTED SHOWER (PAGE 165)





Country Farmhouse Ilfracombe, Devon

THE COLLECTION
2017—18

ABOVE.
THE TORRRIDGE CAST IRON BATH TUB
WITH BALL & CLAW FEET (PAGE 149)

DECORATED IN A STYLE THAT ENCAPSULATES
THE LIGHT AND AIRY BEAUTY OF THE COUNTRYSIDE,
WITH LIGHT TONES AND NATURAL MATERIALS.

BELOW.
THE USK BATEAU CAST IRON
BATH TUB (PAGE 150)



118

THE COLLECTION
2017—18

Loft Conversion Shepherd Bush, London



119

AN ATTIC CONVERSION INTO A LARGE OPEN-PLAN
MASTER BEDROOM SUITE INSPIRED BY THE IDEA OF
A MANHATTAN LOFT, CREATING A LARGE, CALM SPACE
WITH A BRIGHT AIRY FEEL.

ABOVE.
THE MULL CLASSIC BATH AND
SHOWER MIXER (PAGE 155)



LEFT,
THE HUMBER CAST IRON
SKIRTED BATH TUB (PAGE 151)

THE CHESSLETON FLOOR STANDING
BATH & SHOWER MIXER (PAGE 158)

Summery Citrus Townhouse Fulham, London

SUNSHINE YELLOW AND DELICATE FLORALS
MAKE FOR A SUNNY, SUMMERY BATHROOM.

THE COLLECTION
2017—18

Country Manor
Redhill, Surrey

122

THE COLLECTION
2017—18



123

SURROUNDED BY HISTORY AND DESIGN HERITAGE,
THIS IS THE EPITOME OF LUXURIOUS BATHING.

ABOVE,
THE TAY CAST IRON
SKIRTED BATH TUB (PAGE 151)

BELOW.
THE SPEY CAST IRON BATH TUB
WITH BALL & CLAW FEET (PAGE 149)



Country Estate Edinburgh, Scotland



THE DALBY SURFACE MOUNTED SHOWER (PAGE 165)



Open Plan Bathroom Primrose Hill, London

THE COLLECTION
2017—18

ABOVE.
THE USK BATEAU CAST
IRON BATH TUB (PAGE 150)



BELOW.
THE MULL CLASSIC BATH TAPS (PAGE 156)

MERGING ALL THE ROOMS ON THE FIRST FLOOR CREATED
A LARGE OPEN BATHROOM, BEDROOM AND DRESSING ROOM.



BELOW.
THE BRORA HIGH LEVEL WC SUITE (PAGE 195)



ABOVE.
THE HUMBER CAST IRON
SKIRTED BATH TUB (PAGE 151)

Georgian Country House Morden, Dorset

DESIGNED FOR A BUSY COUPLE WHO STRUGGLE TO FIND QUALITY TIME TOGETHER, THIS MASTER BATHROOM TAKES THAT IDEA TO THE MAX – FEATURING TWO HUMBER BATHS.

Sophisticated Townhouse
Richmond, London





BELOW.
THE TAMAR CAST IRON SKIRTED
BATH TUB (PAGE 151)

132

Grade I Listed Georgian Hall Lancaster, Lancashire Designed by KW INTERIORS



THE CARRON SHOWER (ARCHIVED PRODUCT)



THE COLLECTION
2017—18

ABOVE.
THE SINGLE CRAKE VANITY
BASIN SUITE (PAGE 180)

BELOW.
THE EDEN LOW LEVEL WC SUITE (PAGE 195)



GRADE I LISTED GEORGIAN HALL
LANCASTER, LANCASHIRE

RIGHT.
THE BUTE CAST IRON BATH TUB
WITH STEEL SURROUND (PAGE 153)

Townhouse Remodel With Industrial Edge Kew, London

IN KEEPING WITH THE SURROUNDINGS OF THE HOUSE, THE SPACE INCLUDES A ROBUST FREESTANDING CAST IRON BATH TUB. THIS SANCTUARY IS COMPLETED WITH A HANGING PLANT IN THE FORM OF A CHANDELIER.

THE COLLECTION
2017—18



BELOW.
THE TAMAR CAST IRON SKIRTED
BATH TUB (PAGE 151)



138

THE COLLECTION
2017—18

BELOW.
THE NAVER CHINA VANITY BASIN (PAGE 179)



139

Contemporary Terrace House
Syon Park, London
Designed by PAINT & PAPER LIBRARY

THE DESIGNER OF THIS BEAUTIFUL PROPERTY WAS GIVEN A DESIGN BRIEF TO
RESPECT THE GRAND HERITAGE OF THE PROPERTY WITH TRADITIONAL FITTINGS.



Four Storey Townhouse Pimlico, London

LEFT:
THE SINGLE LADYBOWER VANITY
BY MARTIN BRUDNIZKI (PAGE 182)

THE DERWENT VANITY MIRROR
BY MARTIN BRUDNIZKI (PAGE 210)



THE CHESLETON BATH & SHOWER MIXER (PAGE 158)

THIS EXQUISITE FOUR STOREY TOWNHOUSE IN PIMLICO IS HOST TO THREE BATHROOMS AND WITH EACH USING A CLEAN COLOUR PALETTE THEY ALL BRING THEIR OWN PERSONALITY AND CHARACTER THROUGH DECORATIVE FEATURES MAKING THEM ANYTHING BUT PLAIN.

Traditional Cloakroom Kensington, London

LEFT:
THE SINGLE THAMES VANITY
BASIN SUITE (PAGE 181)

THE SINGLE DALBY LIGHT WITH
FLUTED GLASS SHADE (PAGE 211)

THE CLOAKROOM IN THIS TOWNHOUSE HAS BEEN DESIGNED SPECIFICALLY TO
BRING CLASSIC STYLE TO MORE COMPACT SPACES, WITHOUT COMPROMISE.

THE COLLECTION
2017—18





LDN

CHELSEA FLAGSHIP SHOWROOM
642 Kings Road
London SW6 2DU

NOTTING HILL BOUTIQUE SHOWROOM *
27 Chepstow Corner
London W2 4XE

INDEPENDENT DISPLAY ONLY SHOWROOM*
21-25 London Road
Hindhead GU26 6AB

* By Appointment Only

Sales & order enquiries:

T +44 (0)20 7376 4499
E info@drummonds-uk.com

NYC

NEW YORK SHOWROOM
The A&D Building
8th Floor, 150 East, 58th Street,
New York, NY 10155

Sales & order enquiries:

T +1 (212) 794 0157
E info@drummonds-uk.com

HEAD OFFICE
Unit 2C, Henley Business Park
Pirbright Road, Normandy
Surrey GU3 2DX
T +44 (0)1483 237 202

Customer service enquiries:

T +44 (0)1483 237 202

DRUMMONDS-UK.COM

DESIGN:
MADEBYSIX.COM



London & New York

